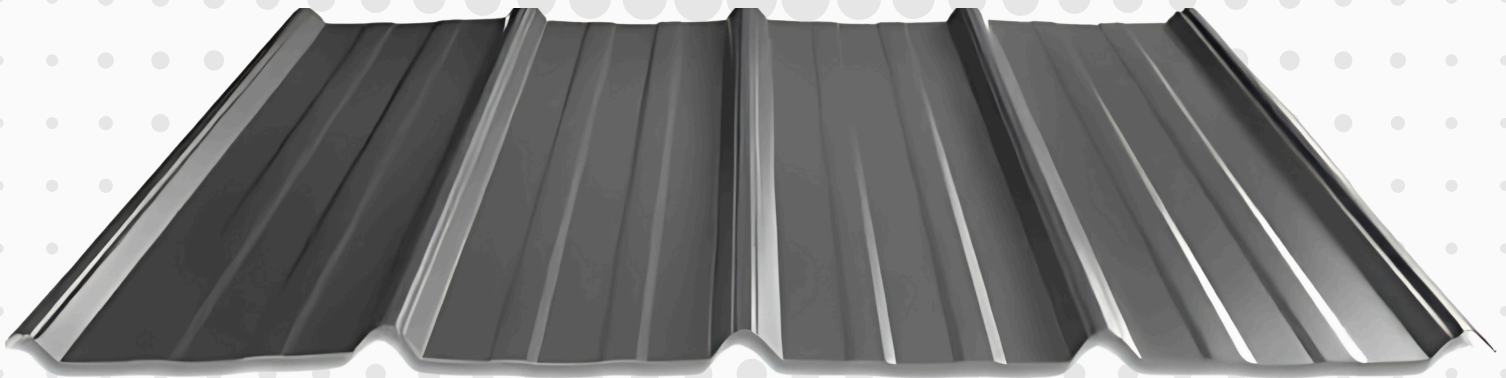
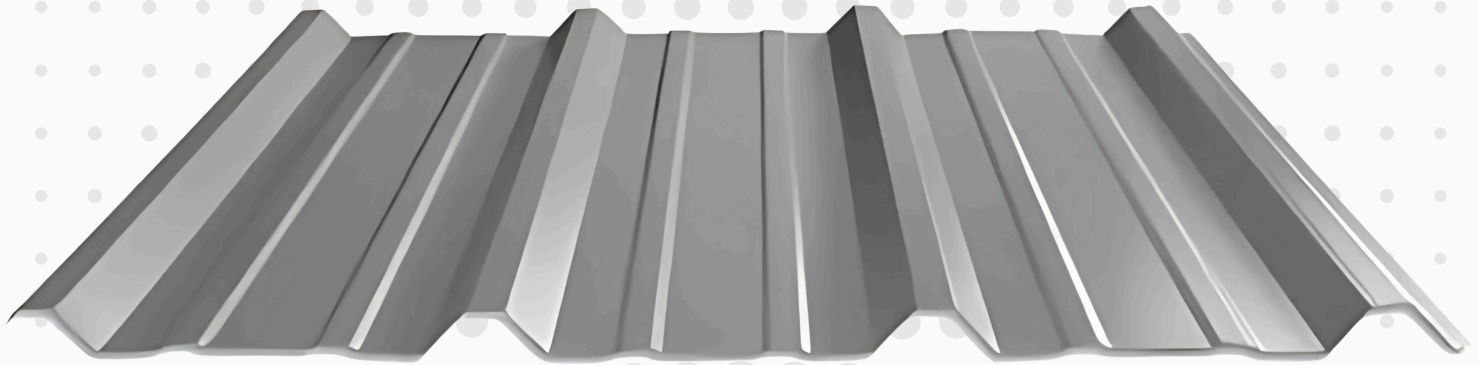




PRODUCT CATALOG



screws



IMAGE

TYPE

CATEGORY



3/4" LAP

STANDARD METAL TO WOOD



1" SCREW

STANDARD METAL TO WOOD



1.5" SCREW

STANDARD METAL TO WOOD



1.5" OSB SCREW

METAL TO OSB



1.5" REPLACEMENT SCREW

LONG LIFE METAL TO WOOD



3/4" ZXL LAP SCREW

LONG LIFE



1.5" ZXL SCREW

LONG LIFE



7/8" LAP SCREW

METAL TO METAL



1" METAL SCREW

METAL TO METAL



FLIP BIT

N/A

SCREW DETAILS

STANDARD METAL TO WOOD:

Fastener designed to attach steel roofing & siding used in post-frame & residential metal roofing applications. Threads transition from fine to coarse to generate superior holding strength in various wood substrates.

METAL TO METAL:

Fastener designed to attach metal roof and sidewall panels used in pre-engineered metal building applications. #12 Diameter 5/16" Cupped HWH self-drilling fastener easily penetrates steel up to .210" in thickness with no "point walking. 7/8" Stitch will securely fasten panel sidelaps up to 18 ga. panel thickness with no strip-out when installed correctly. Cupped head & washer encapsulate EPDM rubber washer & provide a secure seal even when driven at an angle.

LONG LIFE:

Fastener designed to attach steel roofing & siding used in post-frame & residential metal roofing applications. 5/16" cupped HWH with a molded ZAMAC Zinc-Aluminum alloy provides lifetime protection against red rust on the head & washer. Long Life Screws are an excellent choice for galvalume & other long-life metal roof panels. Threads transition from fine to coarse to generate superior holding strength in various wood substrates. Micro-Bit point reduces metal shavings that can embed themselves in the rubber washer.

SCREW DETAILS

REPLACEMENT:

Used to replace old, rusted, or loose screws in existing metal roofing or siding. These screws often have oversized diameters for a tighter fit, improved weather-resistant coatings, and durable sealing washers to prevent leaks and maintain structural integrity.

OSB:

Designed for securing metal panels to oriented strand board (OSB) and other wood substrates. These screws typically feature a sharp self-tapping point, aggressive threads for strong pull-out resistance, and a rubber or neoprene washer to create a weather-tight seal.



HYDRASHELL SUPREME

HydraShell Supreme is a lightweight, easy-to-install 100% synthetic underlayment for steeper slopes under asphalt shingles, synthetic shingles, cedar shakes, and metal. With a unique four-layer construction that makes it 20 times stronger than #30 felt, HydraShell Supreme delivers superior lay-flat properties, won't wrinkle or absorb water, and stays flexible in cold weather. HydraShell Supreme has a Class A fire rating and is backed by a limited lifetime warranty.

HydraShell Supreme delivers superior performance for home- and building owners, while offering easy installation for contractors. Each 10 square roll weighs less than 26 pounds and attaches with standard roof nails, making the installation simple, fast, and inexpensive. With its nonwoven walking surface and specially formulated, low-slip, bottom-side coating, installation is safer as well.

closures



VENTED CLOSURE ROLL

Specially formulated coated polyester has been manufactured from recycled material and is recyclable. Won't absorb moisture, which can freeze and block all ventilation. Vented material will provide maximum air flow, yet prevent wind driven rain when compressed. Unique doubled beaded adhesive for a durable holding strength.
Two pack of 10ft rolls (20ft total)



UNIVERSAL CLOSURE

The material is a flexible semi-closed cell material that is used for filling voids & other openings between metal panels. This closure works well for filling gaps in a panel cut for a valley or hip. They have pre-applied adhesive.
Standard length is 25'



BUTYL

A 100% solids, asbestos free butyl tape sealant in roll form. Applications include metal roof end laps, side laps, vents, gutters, pipe flashings, skylights.
Service temperature range is -40°F to +180°F.
Material will not become brittle or crack.
Available in 3/32" x 3/8" x 45'



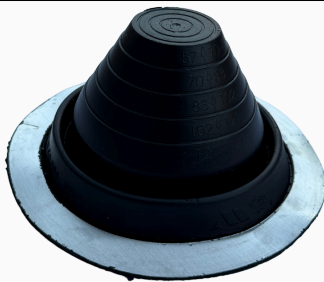
INSIDE/OUTSIDE PANEL CLOSURE

Designed to close gaps in roof & sidewall applications. Material is pre-cut to conform to metal panel. Applications-closing the openings at the ridge or at the eave 1.8 lb. Density polyethylene foam is designed to withstand harsh weather elements including moisture & ultraviolet rays.
Available in PBR and AC profiles



STANDARD HIGH TEMP

The High Temp Boot is a durable flashing solution designed for sealing roof penetrations in high-temperature environments. Can handle -100°F to 450°F. Made from premium heat-resistant silicone, it withstands extreme temperatures while providing a secure, watertight seal. Its flexible construction allows for easy installation on metal roofing systems.



STANDARD

The Standard Boot is a versatile flashing solution designed for sealing roof penetrations on metal roofing systems. Made from durable EPDM or silicone, it provides a watertight, weather-resistant seal for long-term protection. Can handle -65°F to 212°F. Its flexible design allows for easy installation and a secure fit around various pipe sizes.



STANDARD RETROFIT

The Standard Retrofit Boot is a durable flashing solution designed for sealing existing roof penetrations on metal roofing systems. Featuring a split design with a secure fastening mechanism, it allows for easy installation without removing pipes or vents. Made from high-quality EPDM or silicone, it ensures a long-lasting, weather-resistant seal.

STANDARD

1/4"-5" | 5"-9" | 7"-13"

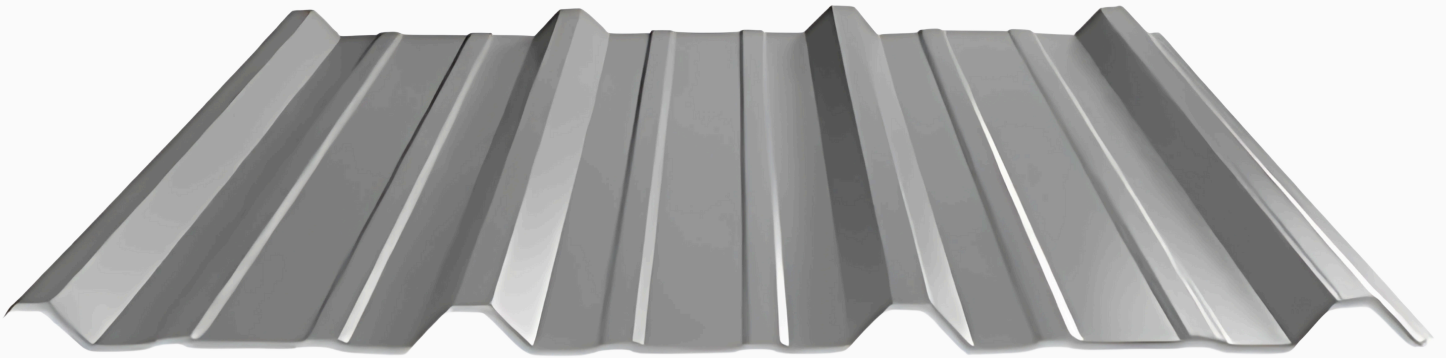
STANDARD HIGH TEMP

1/4"-5" | 5"-9" | 7"-13"

STANDARD RETROFIT

3/4"-2 3/4" | 2"-7 1/4"

PBR PANEL



AVAILABLE IN COLORS

ST

PW

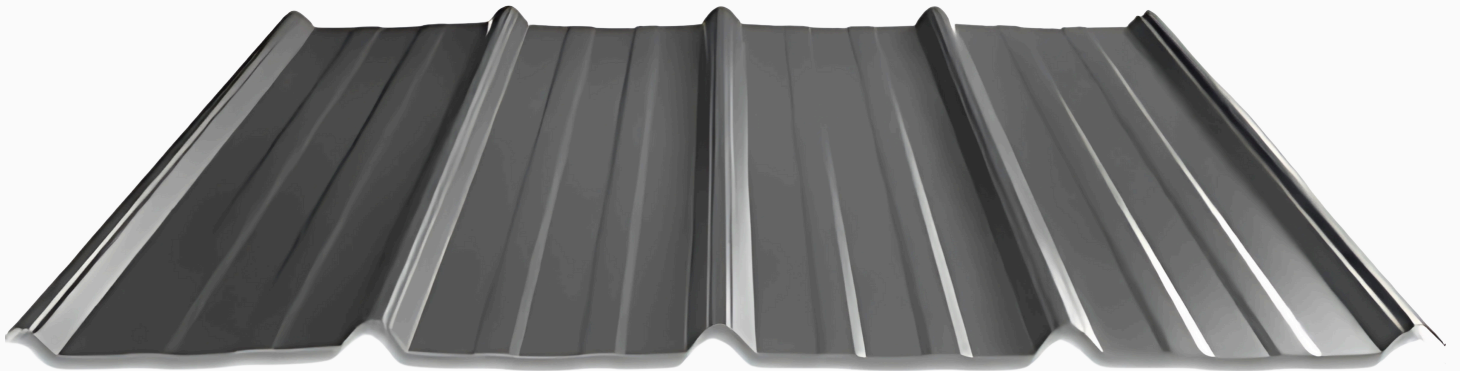
GA

LS

PBR 26-Gauge Steel Panels are a strong, versatile, and efficient solution for roofing and siding. Widely used in commercial, agricultural, industrial, and residential projects, the PBR profile is designed for durability and performance. Its overlapping ribs enhance strength, while the robust lap system provides excellent protection against harsh weather. Crafted from premium 26-gauge galvalume steel, these panels offer outstanding corrosion resistance and are finished with a durable, protective paint that boosts both longevity and visual appeal.

- 36" panel coverage
- Made in lengths 3'-40'
- 1 1/4" trapezoidal ribs on 12" centers
- Exposed fastener panel
- Applies over open framing or solid substrate
- High-quality steel protected by layers of coatings and SMP Weather XL™
- 26 gauge
- Available in Painted or acrylic coated Galvalume®
- Panel Warranty: Limited Lifetime on painted steel
- Minimum roof slope 1:12
- Commercial Metal Roofing and Siding panels
- Can be installed over existing roofing material
- Made with AZ50 Galvalume® Steel grade 80.

AG PANEL



AVAILABLE IN COLORS



The AG Panel is a very affordable option and typically costs less than standard asphalt shingles. The AG Panel features a deep-channel anti-siphon rib designed to prevent capillary action, along with five 3/4" major ribs and eight minor ribs to reduce oil canning. Its design is comparable to popular profiles like Premium Pro Rib[®], Classic Rib[®], Tuff Rib[®], Ultra 2000, 5Rib, Master Rib, and others. As one of the most widely used steel roofing panels in the residential market, the AG Panel stands out for its many advantages, including affordability, low maintenance, exceptional durability, high wind resistance, and simple installation.

- Can be installed over an asphalt shingle roof
- 11 standard colors in stock (in coil form)
- 29 gauge
- Made with AZ50 Galvalume[®] Steel grade 80.
- Weighs on average 1.96lbs per linear ft.
- 40-year Paint Warranty.
- 36" wide nominal coverage.
- Made from 3ft to 40ft, cut to the whole inch.
- Exposed Fastener Panel System.
- Paint coating Sherwin-Williams SMP Weather XL[™]



SQUARE STOCK

Square Steel Tube is a versatile, welded structural-grade tubing available in type A513, depending on size and wall thickness. It is perfect for structural applications, fabrication projects, manufacturing, and repairs.

Commonly used in industrial maintenance, agricultural equipment, transportation, truck beds, trailers, and frames, its box-shaped design offers superior strength and rigidity compared to angles or channels. This steel tubing is easy to cut, weld, shape, and machine with the right tools and expertise, making it a go-to choice for a wide range of projects.

If you are unsure if our A513 square steel tubing will work for your project, please contact your engineer or designer.

CEE PURLIN

C purlins feature a light red oxide coating designed to provide temporary rust protection during shipping. Please note, this coating is not a final finish but rather a primer applied over bare steel, not a galvanized surface. The red primer helps prepare the metal for an additional topcoat of paint.

For best results, we recommend painting red purlins before installation.

Without a secondary paint finish, the purlins may be prone to rust.

MANY SIZES AVAILABLE, NEW PRODUCTS ADDED MONTHLY